

# MONTHLY MEMBERSHIP PROGRESS REPORT

LOCATION WISCONSIN

District 27 E1

Results as of: 6/30/2023

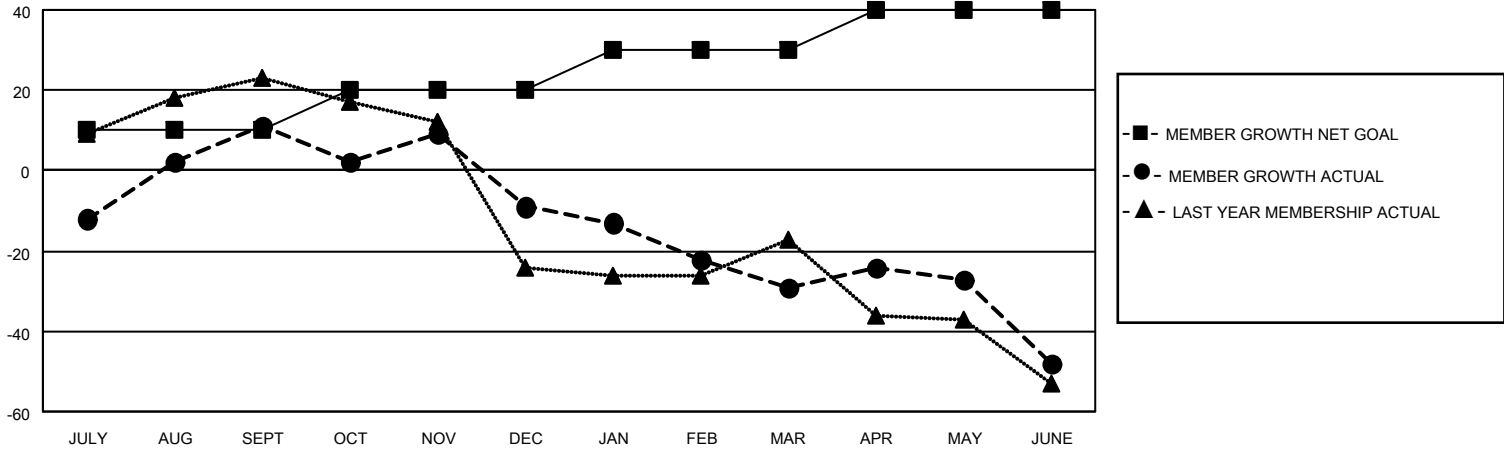
Clubs			
RESULTS FOR 2022-2023			
QUARTER	NEW CLUB GOAL	NEW CLUBS	DROPPED CLUBS
JULY/AUG/SEPT	0	0	0
OCT/NOV/DEC	0	0	0
JAN/FEB/MAR	0	0	0
APR/MAY/JUNE	1	0	1

Members			
RESULTS FOR 2022-2023			
QUARTER	MEMBER GROWTH NET GOAL	MEMBER GROWTH ACTUAL	DROPPED MEMBERS ACTUAL (including transfers)
JULY/AUG/SEPT	10	61	42
OCT/NOV/DEC	10	37	50
JAN/FEB/MAR	10	29	45
APR/MAY/JUNE	10	44	57

**GOALS AND ACTUAL NEW CLUBS CUMULATIVE**



**GOALS AND ACTUAL MEMBERS CUMULATIVE**



**DROPPED CLUBS: 1**

**32 CLUBS OF 45 ADDED 1 OR MORE NEW MEMBERS**

**GENDER DISTRIBUTION**

MALE	938 (67.05%)
FEMALE	461 (32.95%)
NON BINARY	0 (0.00%)
PREFER NOT TO ANSWER	0 (0.00%)

**DROPPED MEMBERS**

[CLICK HERE FOR CUMULATIVE MEMBERSHIP DATA](#)

DECEASED	19
CLUB CANCELLED	0
OTHER	175
<b>TOTAL</b>	<b>194</b>

TOTAL FAMILY UNIT MEMBERS	392
FAMILY MEMBERS PAYING HALF DUES	199